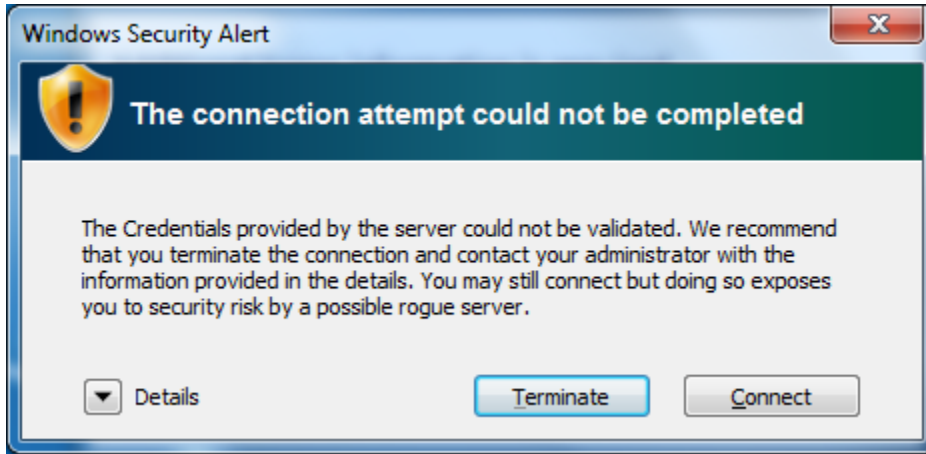
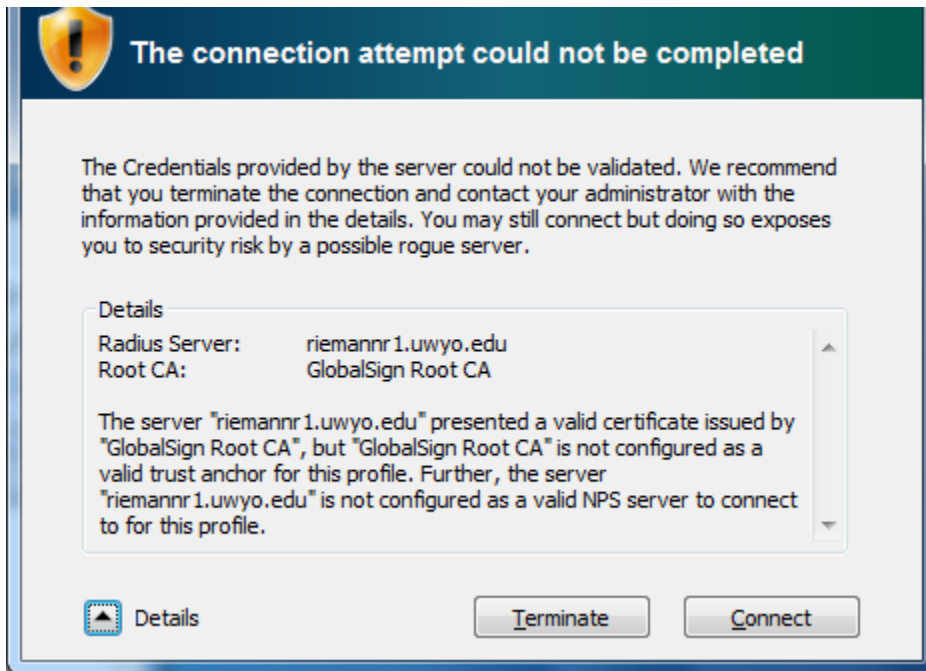


First the User will be prompted to log on to the wireless network with their domain credentials. Then they will receive the following pop-up:



If the user chooses details then more information is available from the pop-up.



The Root CA: will either be GlobalSign or Equifax. The Radius Server: will either be riemannr1 or riemannr3. If the user chooses connect the new certificate will be accepted, they will again be prompted for their domain credentials and will connect normally.